

Technical Requirements

Electric shadows

Theatre with objects for children from 4 +

Contact: Melanie Florschütz, e-mail: post@melanieflorschuetz.de, mobile phone: 0049. 163. 4527285

Variation 1: in a theatre with a rigging system

Height of the rigging/bars: 4,50 - 5,50m

Acting space:

- Height: 4,50 - 5,50 meters optimum (minimum 3,70 meters)
- Should the height have 3,70 - 4,50 m we need 1,00 m more depth
- Breadth: 8,00 - 10,00 meters
- Depth: 8,00 meters scenery + 1,50 meters distance to the audience + space for the audience on inclined seats = about 14,50 meters depth in total
- Our scenery will be installed at ground level or could have an elevated stage up to max 0,60 meters high
- The stage floor scenery should have a dark colour.
- The show starts in the empty room, as we will find it. We would like to install the scenery before the empty wall of your room (doors are welcome, windows not). Every colour of your room is welcome, only white is difficult. Then we would need a black box. Please send us a photo of your empty stage to get an impression of the colours of wall + floor.
- During the show we draw up a curtain/backdrop (made of cotton, weight under 10 kg, the curtain has a variable height of 3,50 - 5,00 m in accordance with the height of your room, 5,86 m wide. Our curtain works like a projection surface where the spots No 5+7 are projecting shadows of things which are turning around at our motorised axis. We need to pass behind our curtain, please plan a passage of 0,50 - 1,00 m between our curtain to the stage wall.
- It must be possible to completely darken the room.
- Please avoid spill light falling at our stage like lamps of emergency or doors (entrance)!

Lighting

We need the following material:

Stands

- 2 x floor stands (Nr. 5 + 13 are installed in the space of the audience, please look for safety!)
- 2 x stable microphone stands for our loudspeakers (we will bring the sound with us!)

Lights

- 3 x PC 1000 W Robert Juliat 60° or 3 x Selecon Pacific 75° Zoomspot or similar. (We need 3 identical spots with a clear lens for a sharp projection at our backdrop curtain. Please take spots with a large beam angle from a short throw distance.
- 11 (12) x PC 1000 W
- 3 (4) x floodlight asymmetrical 1000 W
- Barn doors and black wrap for all lights
- Frost filter for Nr. 8 (lights the whole backdrop)
- special feature in rooms with a height under 4,50 m:
 - PC spot Nr. 12 will be changed by a floodlight 1000 W
 - PC spots Nr. 15 will be doubled = 13 (14) PC 1000 W in total

Lights for the audience

- please think of dimmable lights for the audience

Dimmable circuits

- We need dimmer with **22 dimmable circuits** minimum (plus 1 circuit for dimmable lights for the audience)
- for all lights
- inclusive 2 x dips dimmable for 2 x Dedolights à 150 W/24 of us
- inclusive 2 x dips dimmable reserved for the manipulation of our motorised axis (rotation: direction + speed)

Dimmer

- We need dimmer in accordance with all lights with **22 dimmable circuits** minimum.
- 1 x DMX connection (3- or 5- pole) from your dimmers to our lighting desk at stage right.
- During the show we operate the light by ourselves by a computer/LAN-Box and a remote control.
- We can softpatch the numbers of the lights.

Current

- heavy current in accordance with the lights
- 1x plug 230 V for the computer/LAN-Box (stage right)
- 1x plug 230 V for the sound (stage right)

Extension cables

- for all lights

Sound

- We will bring the sound with us! Please provide 2 x stable microphone stands for our loudspeakers.

Others

- 1x ladder to install the lights at a height of 4,50 -5,00 m
- 2x weights 15-20 kg
- 1x dressing room. Please give us 2 towels and the possibility to take a shower.
- Thank you for water, nuts and fruits.

Situation of the audience

- Please install inclined seats for the audience in front of our scenery. It is important that the audience has a good view at our stage floor.
- Max. number of viewers on inclined seats: max. 90 person
- Without inclined seats: max. 50 persons
- Distance from our acting area to the first row of the audience: minimum 1,50 m.

Time schedule and personal

- Time needed for preparing the stage: 5 hours (after presetting) under presence of 1 x light technician
- Time needed to clear the stage: 1 hour (with help of 1 person)
- Opening of the stage before we start the show (for rehearsal, warming up) : 75 minutes
- Duration of the show: 40 minutes
- Thank you for helping us un- and reloading the van (15 min.)
- We prefer to build up our stage the day before. In case that the build up will be at the day of the show, we ask you to plan 7-8 hours between the start of the build up of the set and the show start.

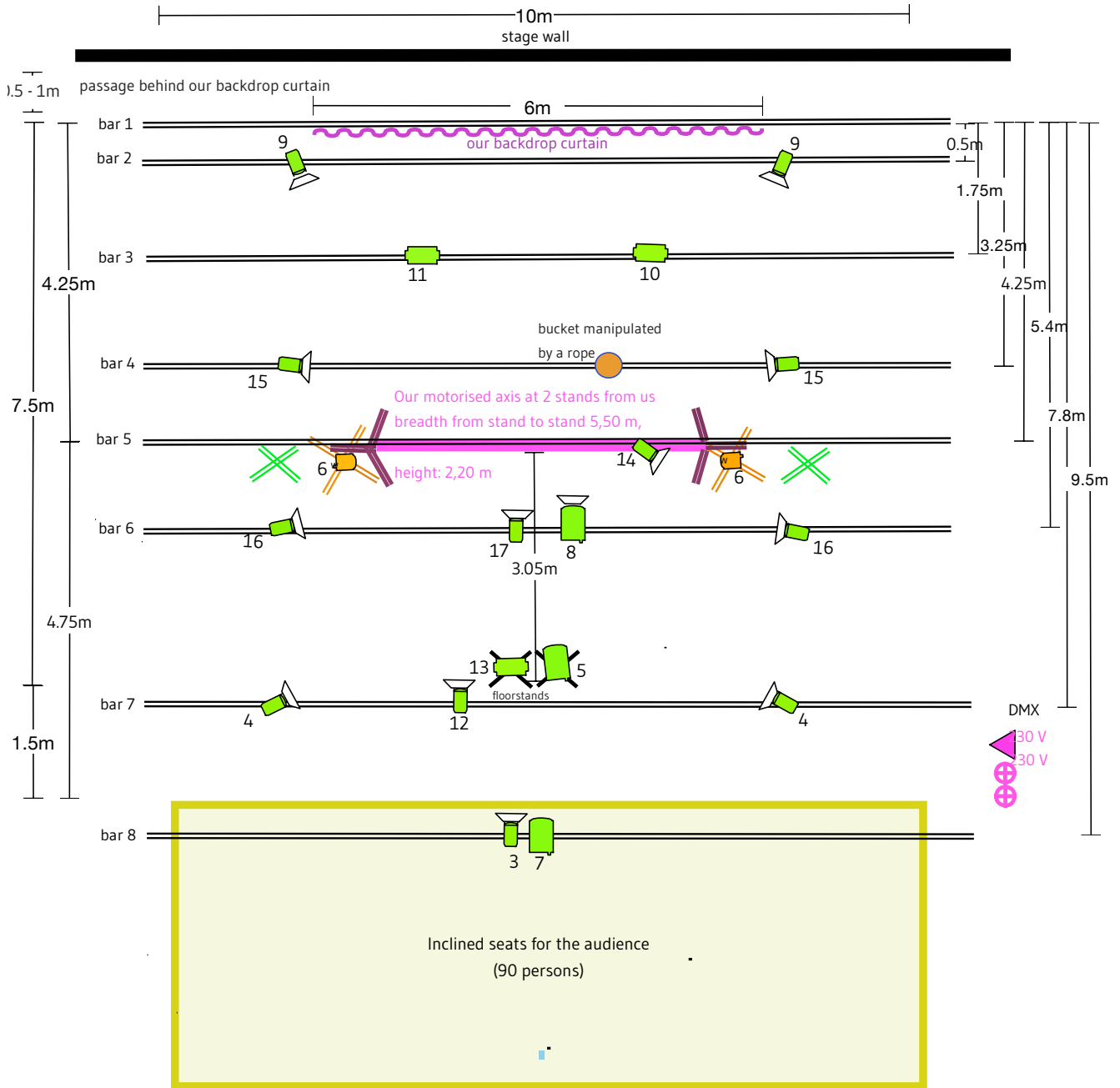
Electric shadows

Theatre with objects for children from 4 +

Contact: Melanie Florschütz, e-mail: post@melanieflorschuetz.de, mobile phone: 0049. 163. 4527285

Variation 1: in a theatre with a rigging system

Here: height of the rigging/bars: 5,50m



Explication

We need dimmer with **22 dimmable circuits** minimum (plus 1 circuit for dimmable lights for the audience)



3 x PC 1000 W Robert Juliat 60° or 3 x Selecon Pacific 75° Zoomspot or similar. (We need 3 identical spots with a clear lens for a sharp projection at our backdrop curtain. Please take spots with a large beam angle from a short throw distance.



11 (12) x PC 1000 W



3 (4) x floodlight asymmetrical 1000 W

- Please think of dimmable lights for the audience!
- Barn doors and black wrap for all lights
- Frost filter for Nr. 8 (lights the whole backdrop)
- Special feature in rooms with a height under 4,50 m:
- PC spot Nr. 12 will be changed by a floodlight 1000 W
- PC spots Nr. 15 will be doubled = 13 (14) PC 1000 W in total



2 x dips dimmable for 2 x Dedolights à 150 W/24 on stands of us



2 x floor stands (Nr. 5 + 13 are installed in the space of the audience, please look for safety!)



2 x stable microphone stands for our loudspeakers (we will bring the sound with us!)

- 2 x weights à 15-20 kg

at stage right:



1 x DMX connection (3- or 5- pole) from your dimmers to our lighting desk



1x plug 230 V for the computer/LAN-Box (stage right)

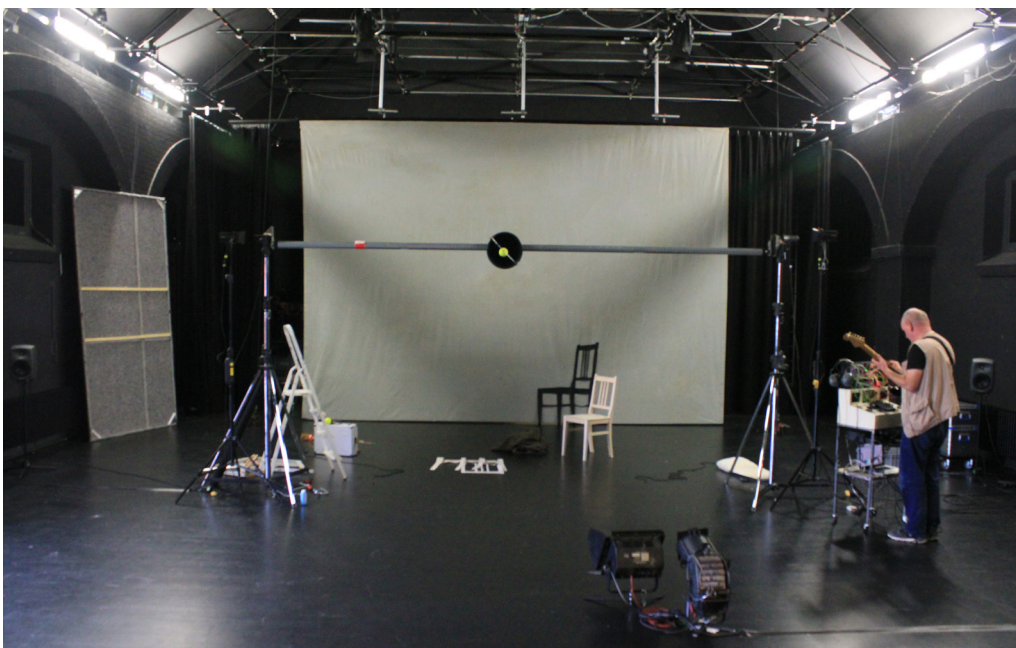


1x plug 230 V for the sound (stage right)



A bucket fixed at bar 4, manipulated by a rope

View of our scenery (with our motorised axis at to stands from us and our backdrop curtain. The show starts in the empty room in front of the back stage wall.

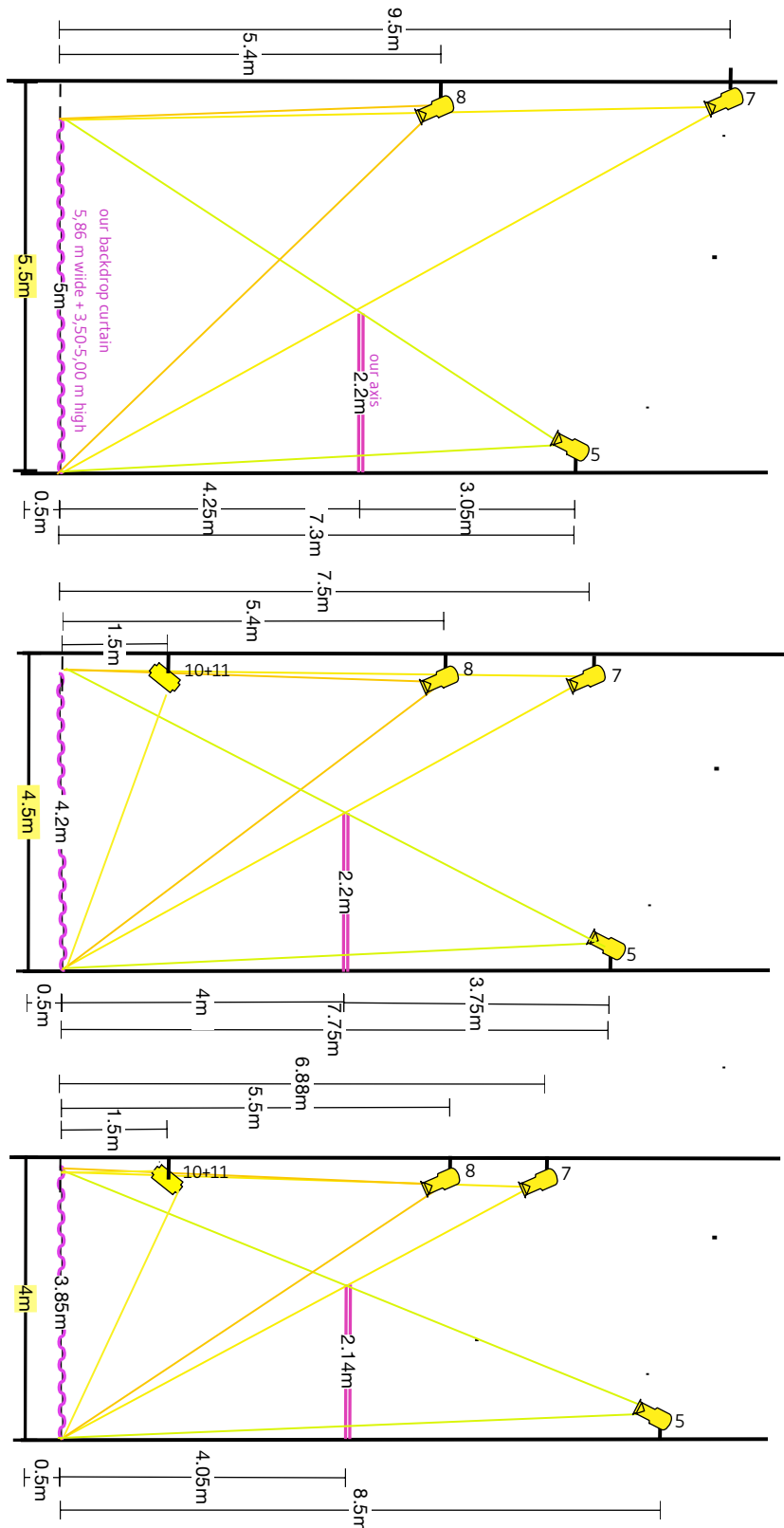


Side view with different heights of the rigging

The show is playing with objects turning around at our motorised axis. The shadows of these objects are projected at our backdrop curtain. Here you see the focus of the lights Nr. 5,7,8 who are involved in the projection (here: 3 x Selecon Pacific 75° Zoomspot or PC Robert Juliat 60°) Each of the 3 lights is lighting the whole backdrop curtain from different angles. We need 3 identical spots with a clear lens for a sharp projection at our backdrop. Please take spots with a large beam angle from a short throw distance.

- special feature in rooms with a height under 4,50 m: the floodlights Nr. 10 +11 are also participating the play of shadow/no shadow. The spot on the floor stand then needs 1,00 meter more distance to our backdrop.

We need to pass behind our curtain, please plan a passage of 0,50 - 1,00 m between our curtain to the stage wall.



Material of our backdrop curtain hardly inflammable in accordance with DIN 4102 B1

GmbH & Co. KG
PERFORMANCE
Bühnenbedarf • Messe- und Bühnenstoffe



PERFORMANCE • Crellestrasse 22 • 10827 Berlin

Theater
Florschütz-Döhnert
Kulmer Str. 31

10783 Berlin

782.79.08
0163-45.27.285

Crellestrasse 22
10827 Berlin
Telefon (030) 781 87 75
Fax (030) 782 40 62
info@performance-
buehnenbedarf.de

BERLINER VOLKSBANK
BLZ 100 900 00
Konto 54 500 12000
PERFORMANCE –
Bühnenbedarf
Messe- und Bühnenstoffe
GmbH & Co. KG
USt-ID. DE136673135
Berlin HRA 20932

Persönlich haftende
Gesellschafterin
PERFORMANCE –
Theaterhandel & Verleih
Beteiligungs- und
Verwaltungs GmbH
Berlin HRB 25431
Geschäftsführerin
G. Riemensperger

SCHWERENTFLAMMBARKEITSBESTÄTIGUNG

Nr. **1806146**
Datum **29.06.2018**

Wir bestätigen hiermit, daß der Stoff gemäß unserer

Rechnung Nr. 1806146 vom 29. 6. 2018

für
14 lfm Nessel
Baumwolle
grau
ca. 500 cm breit, ca. 220 g/m²

schwer entflammbar imprägniert ist nach **DIN 4102 B 1**

Imprägniermittel **AFLAMMIT KRE**

Prüfzeichen **P-BWU03-I-16.5.149**

Allgemeines bauaufsichtliches Prüfzeugnis

Materialprüfungsanstalt Universität Stuttgart

vom DIBT anerkannte Prüfstelle – Kennnummer BWU 03

Die mit dem Mittel ausgerüsteten Gewebe dürfen nur in geschlossenen
Räumen ohne Feuchtigkeitwirkung verwendet werden.

Das Feuerschutzmittel ist nicht beständig gegen die Einwirkung von Wasser
sowie Wäsche und Chemischreinigen.

Die mit dem Feuerschutzmittel ausgerüsteten Gewebe sind nur schwerentflammbar
ohne zusätzlich aufgetragene Anstriche, Beschichtungen oder ähnlichem.

Mit freundlichen Grüßen
PERFORMANCE

G. Riemensperger

Ihre Ansprechpartnerin bei Rückfragen