

# A Quarter to Night

Theatre with objects for children from 3 +

**Contact:** Melanie Florschütz, e-mail: [post@melanieflorschuetz.de](mailto:post@melanieflorschuetz.de), mobile phone: 0049. 163. 4527285

We are coming with two artists who also are the technicians

## INSTALLATION in a theatre with a rigging system

### Acting space

- Breadth: 7 - 10 m (7 m mini )
  - Depth: 5,50 m (mini )
  - Height: 3 m 50 mini
  - Our scenery will be installed at ground level or could have an elevated stage up to max 1,00 meters high
  - We need a black box situation with a dark/black stage floor and black curtains/walls
  - it must be possible to completely darken the room.
  - Please avoid spill light falling at our stage like lamps of emergency or doors (entrance)!
  - The audience should have a good view at stage floor.
- If your room is smaller, please contact us. We will then see if we can adapt. If you do not have the pipes shown in our technical plan, we can look for other solutions together

### Lighting

*Required spotlights from the venue:* we prefer Hallogen lamps!

- **7x PC 1000 W or fresnel**
- **4x PC 650-1000 W or fresnel**, please place directly on an inclined bracket, without floor stand
- All spots require barndoors or black wrap
- Filters required for all 11x PC's: ROSCO 119 and LEE 201
- Please think of dimmable lights for the audience! (controlled by you or by us)

*Required dimmable circuits for spots from us:*

3x dimmable circuits for 3x solenoids in the rigg  
1x dimmable circuits for 1x solenoid on the floor

*We bring following spots with us:*

- 1x Cameo Spot 40 W to illuminate the mirror ball (diameter 20 cm)
- 5x LED 150 W spotlights powered by a single direct current (the 5x LEDs are connected to each other by a DMX hybrid cable + current)

*Required power connections/DMX from the venue:*

at stage back on the floor:

- 1x DMX connection (3 or 5 pole) from your dimmers to our lightng desk
- 1x plug 230 V for our lighting desk (computer)

at the left side of the stage on the floor:

- 1x plug 230 V for a switch pack
- 1x plug 230 V for the sound

in the rigg:

- 1x plug 230 V for the first LED in chain N°401
- 1x plug 230 V for the pinspot N° 313
- 1x plug 230 V for a motor for the mirror ball (diameter 20 cm) N°25

### **Dimmer**

- We need dimmer in accordance with all lights with **12 dimmable circuits** minimum.  
plus 1 circuit for dimmable lights for the audience  
plus 4 dimmable circuits for 4x solenoids
- 1 x DMX connection (3- or 5- pole) from your dimmers to our lighting desk at stage back
- During the show we operate the light by ourselves by a computer and a remote control.
- We can softpatch the numbers of the lights up to one universe

### **Sound**

We would like to use your sound system! The sound should come from behind the audience

### **Extras:**

- We need 2x weights of 10 kg

### **Others**

- 1x dressing room. Please give us 2 towels and the possibility to take a shower.
- Thank you for water, nuts and fruits.

### **Situation of the audience**

- It is important that the audience has a good view at our stage floor.
- If the stage is at ground level, the audience should be seated at inclined seats.
- If the stage is raised, the audience can sit at ground level.
- Max. number of viewers on inclined seats: max. 100 persons
- Without inclined seats: max. 50 persons
- Distance from our acting area to the first row of the audience: minimum 1,50 m.

### **Time schedule and personal**

- Time needed for preparing the stage: 5-6 hours (after presetting) under presence of 1 x light technician
- Time needed to clear the stage: 1 hour (with help of 1 person)
- Opening of the stage before we start the show (for rehearsal, warming up) : 75 minutes
- Duration of the show: 40 minutes
- We have to build up our stage the day before. In case that the build up will be at the day of the show, we ask you to plan 7 hours between the start of the build up of the set and the show start.

We would like to welcome the audience in the foyer. We will then lead the audience into the hall in groups with torches. If possible, please organise additional torches for the admission staff. It is not as bright as usual in the audience area, but not completely dark either (as far as it is still safe).

### **Certificates for flame retardancy B1**

for our black curtain and the tulle with which the figures are made, see page 5-8

# A Quarter to Night

Theatre with objects for children from 3 +

**Contact:** Melanie Florschütz, e-mail: post@melanieflorschuetz.de, mobile phone: 0049. 163. 4527285

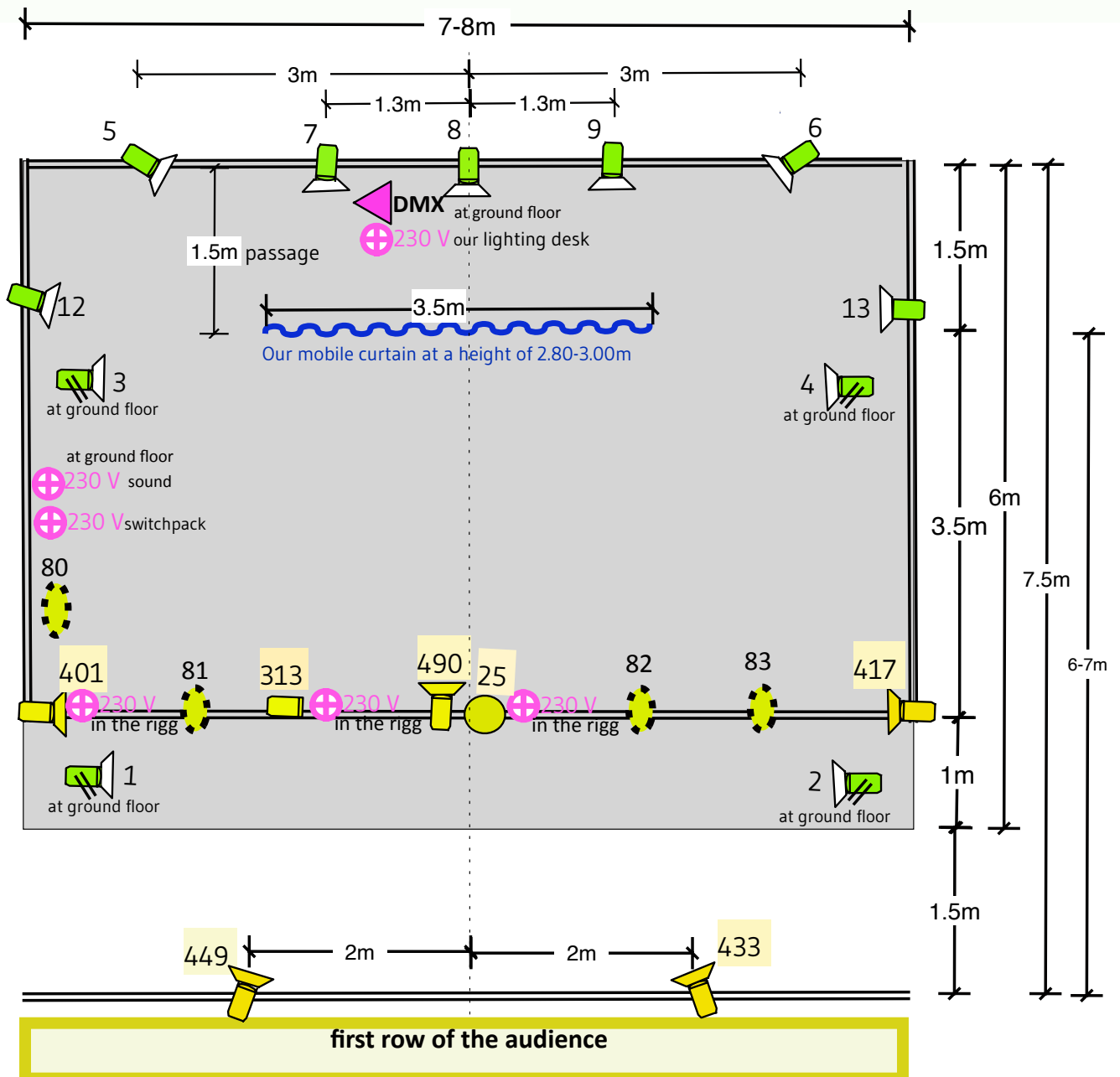
**in a theatre with a rigging system**

**Set up : 5-6 hours**

**Acting space (black box with black floor and black surrounding/curtains)**

breath: 7-10 m (minimum 7m) /depth : 5,50m (minimum)

height: 3.50 m minimum



Max. number of viewers on inclined seats: max. 100 persons

## Explication:

We need dimmer with **12 dimmable circuits** minimum

plus 1 circuit for dimmable lights for the audience

plus 4 dimmable circuits for 4x solenoids

*Required spotlights from the venue:* we prefer Hallogen lamps!



**7x PC 1000 W or fresnel**



**4x PC 650-1000 W or fresnel**, please place directly on an inclined bracket, without floor stand

- All spots require barndoors or black wrap
- Filters required for all 11x PC's: ROSCO 119 and LEE 201
- Please think of dimmable lights for the audience!

*Required dimmable circuits for spots from us:*



3x dimmable circuits for 3x solenoids in the rigg



1x dimmable circuits for 1x solenoid on the floor

*We bring following spots with us:*

313



1x Cameo Spot 40 W to illuminate the mirror ball (diameter 20 cm)



5x LED 150 W spotlights powered by a single direct current (the 5x LEDs are connected to each other by a DMX hybrid cable + current )

*Required power connections/DMX from the venue:*

at stage back on the floor:



1x DMX connection (3 or 5 pole) from your dimmers to our lightng desk



1x plug 230 V for our lighting desk (computer)

at the left side of the stage on the floor:



1x plug 230 V for a switch pack



1x plug 230 V for the sound

in the rigg:



1x plug 230 V for the first LED in chain 401



1x plug 230 V for the pinspot 313



1x plug 230 V for the motor for the mirror ball (diameter 20 cm) 25

**Sound:** we would like to use your sound system! The sound should come from behind the audience.

**Extras :** We need 2x weights à 10 kg to stabilise our mobile curtain

Gerriets GmbH  
Im Kirchenhürstle 5-7  
DE-79224 Umkirch bei Freiburg

Telefon: (+49) 07665-960-0  
Telefax: (+49) 07665-960-125  
e-mail: info@gerriets.com  
internet: www.gerriets.com  
ID-Nr.: DE 142 191 543  
St. Nr.: 0719502621



Gerriets GmbH Postfach 1154 D 79220 Umkirch

Florschütz & Döhnert  
Melanie Florschütz  
Kulmer Str. 31

10783 Berlin

Anlage zu unserer Lieferung Rechnung Nr. 13408492 vom 03.01.2024

## Flammenschutzbescheinigung

nach  
DIN 4102 Teil 1

Hiermit bestätigen wir, daß nachfolgende Positionen der oben genannten Lieferung exakt nach Herstellervorschrift ausgerüstet wurden. Diese Bescheinigung ist nur in Verbindung mit dem dazugehörigen Lieferschein gültig.

Pos.	Material Beschreibung	Menge / Einheit	Hersteller / Flammenschutzmittel	Klassifizierung DIN
1	Moltonstoff BOLTON, einseitig geraut Material: reine Baumwolle, Farbe: tiefschwarz, Breite: 300 cm, Gewicht: 320 g/m². Schwer entflammbar, Baustoffklasse: DIN 4102 B1 und EN 13501-1 C-s1,d0.	7,80 m	Rudolf GmbH RUCO-FLAM NGF P-22-004157-PR04-ift	schwer entflammbar 4102 B1

Mit freundlichen Grüßen

G E R R I E T S GmbH  
- Bühnenbedarf -

Dieses Dokument wurde digital erstellt und ist ohne Unterschrift gültig.

# Zertifikat Nr. 12

Tüll  
Material:  
100% Polyamid



Brugherio, 01/06/2023

STOFF PALETTE GMBH  
HAUS-HOFMANN-STRASSE 11  
95213 MUENCHBERG  
GERMANY

Herewith we declare that MCC Srl appointed the

***QUALITY TESTING LABORATORY of CLOTEFI SA***

To make the following test on our item Tulle 4 DEN040 Fire Retardant h. 140 cm. as follows

Date of report issue: 10/10/2018

**DETERMINATION OF FLAMMABILITY:**

EN 71-02: 2011 SAFETY OF TOYS – PART 2: FLAMMABILITY

Pre-Treatment : not applied

Climate Conditions: Temperature: 20+<sub>-</sub>5°C; Relative Humidity: 65+<sub>-</sub>5%

Specimens Dimensions: 610x100 mm

Tested Surface: Face side

Flame Time: 0sec

**RESULTS:**

GENERAL REQUIREMENTS: CONFORM

TIME (sec): 0

RATE of SPREAD (mm/sec): 0

Kind Regards

MCC Srl

  
Viale Lombardia, 51  
20861 BRUGHERIO (MB)  
Tel. 039 2142513 - Fax 039 2876431  
Partita IVA n. 03816610962