

## Technical Requirements

# Ssst!

Theatre for children from 2 +

### Variation 2: in a black box

#### Acting space:

- height: 3,20 m minimum
- breadth: 6,00 m minimum
- depth: 4,50 m scenery + 2,50 m distance to the first row audience + 4,00 m inclined seats= ca. 11,00 m  
7,00 x 7,00 m and 4,00 m height is better.
- It must be possible to completely darken the room.
- We need a black backdrop and a black dance floor of our acting space.
- We play on the same level as the audience (no elevated stage), facing the audience.
- We will need an exit/hiding during the performance at stage right in 3,50 m distance from our stage back. Please organise an exit in the curtain or hang us a teaser of 1,00 m breadth to hide behind.

#### Technical material to organise:

- **a light bridge** (breadth 7,00 m, height 3,50 m) for the front light
- **4 x stands** (with a height of 3,00 - 3,50 m) for 4 lights in the back and beside

If we play in a multi purpose room please organise a structure to build up a black box with a black dancefloor and black curtains. Then we would use this structure to hang the lights. Think of the exit in the curtain at stage right.

- a black box with the acting space of 7,00 x 7,00 m / height 3,50 m could be built with 4 trusses
- a black box with the minimum of acting space 6,00 x 6,00 m / height 3,50 m could be built with 3 trusses and a light bridge (breadth 7,00 m, height 3,50 m) for the front light (distance to the black box: 1,00 m)

#### Power connection

- 1 x heavy current 32 A minimum
- 1x plug 230 V for the computer/LAN-Box at stage left
- 1x plug 230 V for the sound at stage right

#### Dimmer

- dimmer corresponding to the lights with **11 dimmable circuits** min. inclusive dimmable light for the audience
- DMX connection to our lighting desk 3- or 5- pole at stage left

During the show we operate the light by ourselves by a computer/LAN-Box and a remote control.

We can softpatch the numbers of the lights. Are the plugs in Germany different to yours? If they are different, please organise for us: 2 x convertors to german schuko 230V.

#### Lights

- 8 x PC 650-1000 W with barn doors
- 1 x Profile 650-1000 W Zoom 15-30° with Iris
- 2 x Profile 650-1000 W Zoom 25-50°, N°3: 2 x with Gobo holder
- 2 x circuits dimmable for 2 x 500 W light of us, at stage left or right
- please hang also dimmable lights for the audience we can control

#### Sound

We bring the sound with us.

If you have we would also use your soundsystem (2 boxes installed in the background, our exit has 2 x jack)

### Situation of the audience

We play on the same level as the audience (no elevated stage), facing the audience. It is important that the audience can see our stage floor. There should be a distance of about 2,50 meters of our stage to the first row of the audience.

### Max. number of viewers

- on inclined seats 70 persons

gently inclined seats (built with rostrums at about 8,00 m width, with optimal rising rows of 30/60/90/90 cm) for the audience would be best. Please organise cushions. Prepare only one last row with chairs.

- without inclined situation 60 persons

seated on ground floor at mats, cushions, benches and chairs

### Time schedule

- Time needed for preparing the stage: 3 hours under presence of a light technician

We prefer to make the set up the afternoon/evening before the first show in the morning.

If the set up will be at the same day as the first show, we have to start the set up 5 hours before the show

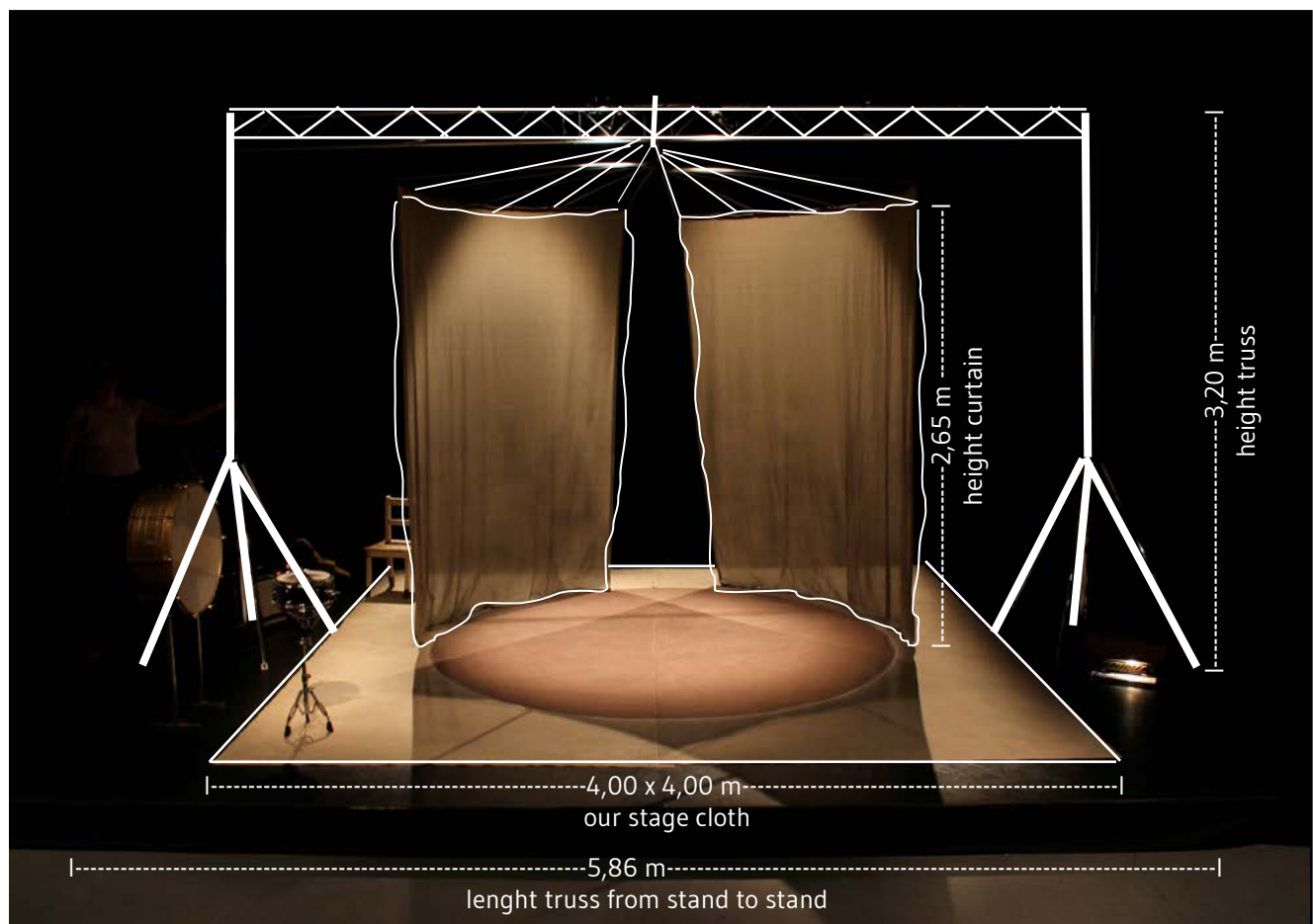
- Time needed to clear the stage: 45 min.
- Opening of the stage before we start the show (for rehearsal, warmig up) : 75 minutes
- Duration of the show: 30 minutes
- Thank you for helping us un- and reloading the van (15 min.)

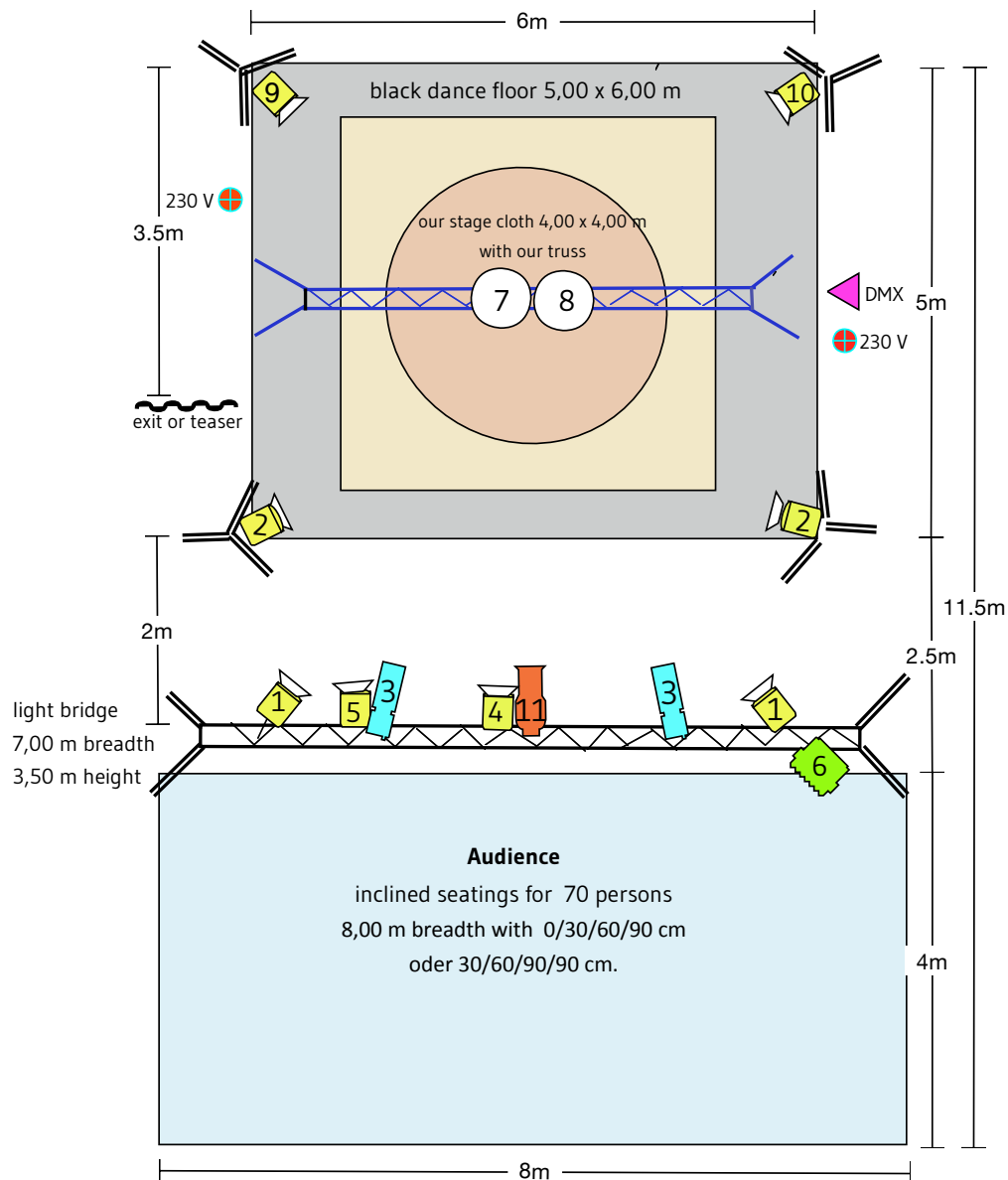
### Others

- We need 1x dressing room. Please give us 2 towels and the possibilty to take a shower.
- Thank you for water, nuts and fruits.

**Contact:** Melanie Florschütz , e-mail: [post@melaniefloerschuetz.de](mailto:post@melaniefloerschuetz.de), mobile phone: 0049. 163. 4527285

**View of our stage scenery** with our stage cloth and our truss where a curtain turns around itself.





#### Explication:

##### We need

Dimmer with **11 dimmable circuits** inclusive audience light



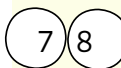
**8x PC à 650-1000 W with barn doors**



**1x Profile 650-1000 W Zoom 15-30° with Iris**



**2x Profiler 650-1000 W Zoom 25-50° with gobo holder**



**2x dimmable circuits for 2x 500 W lights of us**



**dimmable lights for the audience**



DMX connection from your dimmer pack to our lighting desk 3- or 5- pole



2x plugs 230 V for sound and Computer (LAN-Box)



exit or teaser of 1,00 m breadth



4x stands 3,00 m height or the 4 lights will be fixed at the black box construction

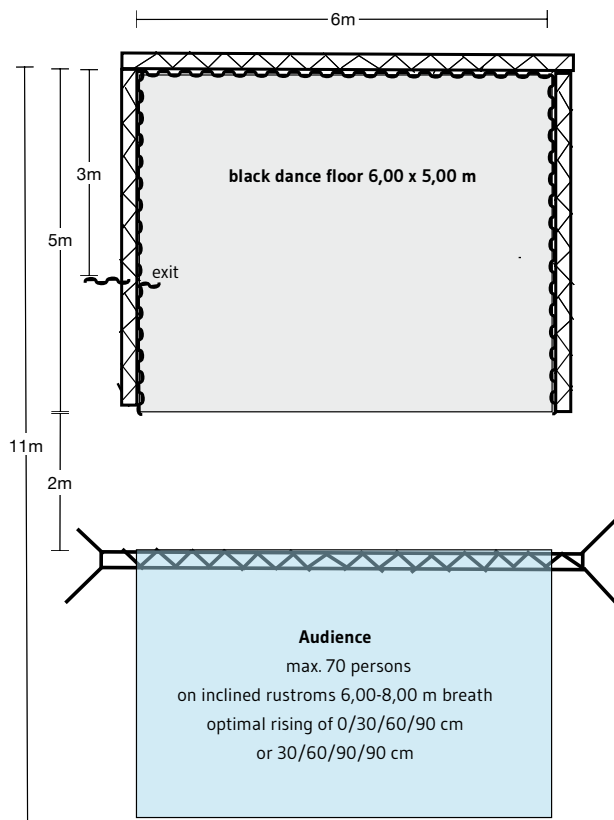
## Proposals for the construction of a black box

### A) Black Box

breadth : 6,00 m / depth : 5,00 m / height : 3,50 m

(built up with 3 trusses)

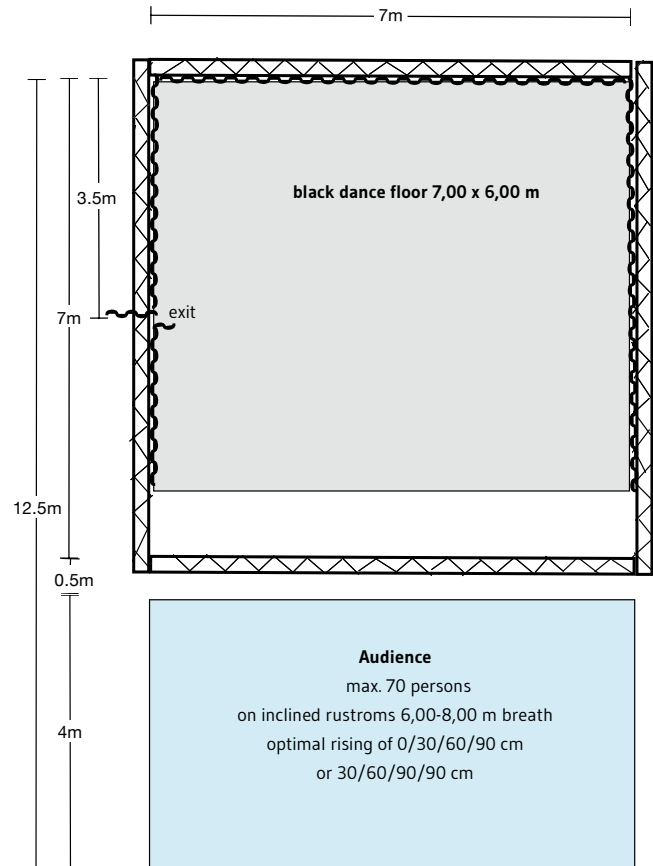
+ **light bridge** for the front light breadth : 7,00 m / height: 3,50 m



### B) Black Box

breath : 7,00 m / depth : 7,00 m / height : 3,50 m

(built up with 4 trusses)



Material of our curtain hardly inflammable in accordance with DIN 4102 B1

GmbH & Co. KG  
**PERFORMANCE**  
Bühnenbedarf • Messe- und Bühnenstoffe



PERFORMANCE • Crellstrasse 22 • 10827 Berlin

Theater  
Florschütz-Döhnert  
Kulmer Str. 31

10783 Berlin

Crellstrasse 22  
10827 Berlin  
Telefon (030) 781 87 75  
Fax (030) 782 40 62  
info@performance-  
buehnenbedarf.de

BERLINER VOLKSBANK  
BLZ 100 900 00  
Konto 54 500 12000  
**PERFORMANCE -**  
Bühnenbedarf  
Messe- und Bühnenstoffe  
GmbH & Co. KG  
JSt-ID: DE136673135  
Berlin HRA 20932

Persönlich haftende  
Gesellschafterin  
**PERFORMANCE -**  
Theaterhandel & Verleih  
Beteiligungs und  
Verwaltungs GmbH  
Berlin HRB 25431  
Geschäftsführerin  
G. Riemensperger

**SCHWERENTFLAMMBARKEITSBESTÄTIGUNG**

Nr. **1208311**  
Datum 13-08-2012

Wir bestätigen hiermit, daß der Stoff gemäß unserer

Rechnung Nr. 1208311 vom 13. 8. 2011 für

Pos. 5 + 6  
Gobelin, mittelgrau/hell  
10 m breit/1,30 m lang  
10 m breit/5,40 m lang  
dreifädig

schwer entflammbar imprägniert ist nach **DIN 4102 B 1**

Imprägniermittel **Kappaflam CTI**  
Prüfzeugnis Nr. **P-3972/2552-MPA BS**

Allgemeines bauaufsichtliches Prüfzeugnis

Institut für Baustoffe, Massivbau und Brandschutz

Materialprüfanstalt für das Bauwesen (MPA), Braunschweig

Die Imprägnierung ist nicht beständig gegen Waschen und Chemischreinigen.

Pos. 1	
Gobelintüll, mittelgrau	
Reststück 1,75 x 1 m -	12,75
Reststück 3,70 x 0,90 m -	23,30
dreifädig	

Pos. 2	
Gobelintüll - großmaschig	29,00
5,50 m breit/0,80	

schwer entflammbar imprägniert ist nach **DIN 4102 B 1**

Imprägniermittel **Flammentin KRE**  
Prüfzeichen **P-BWU03-I-16.5.149**

Allgemeines bauaufsichtliches Prüfzeugnis

Otto-Graf-Institut, Universität Stuttgart

Forschungs- und Materialprüfungsanstalt für das Bauwesen (FMPA)

Die Imprägnierung ist nicht beständig gegen Waschen und Chemischreinigen.

Mit freundlichen Grüßen

**PERFORMANCE**

G. Riemensperger

Ihre Ansprechpartnerin bei Rückfragen