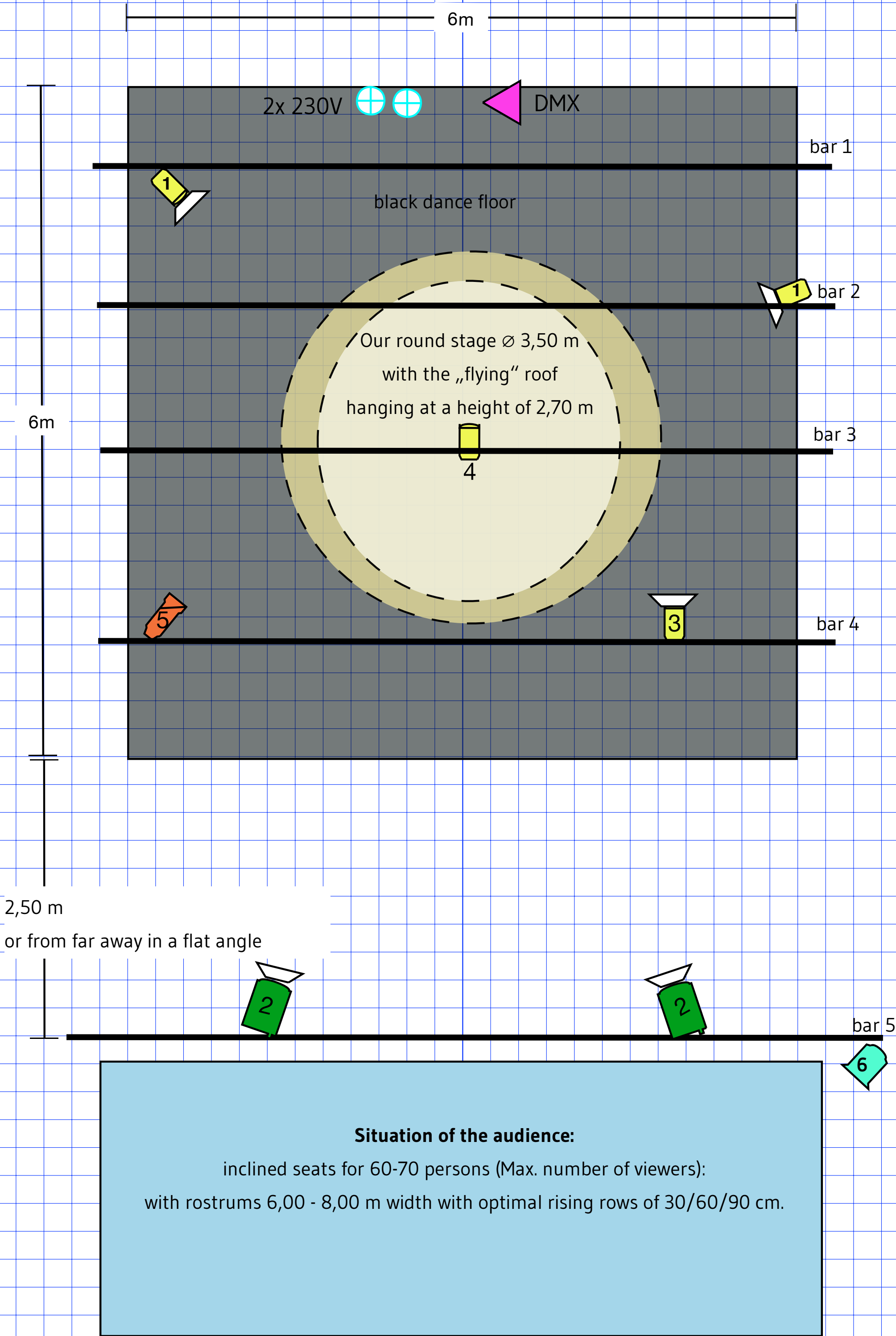


Lighting plan in a theatre with a rigging system

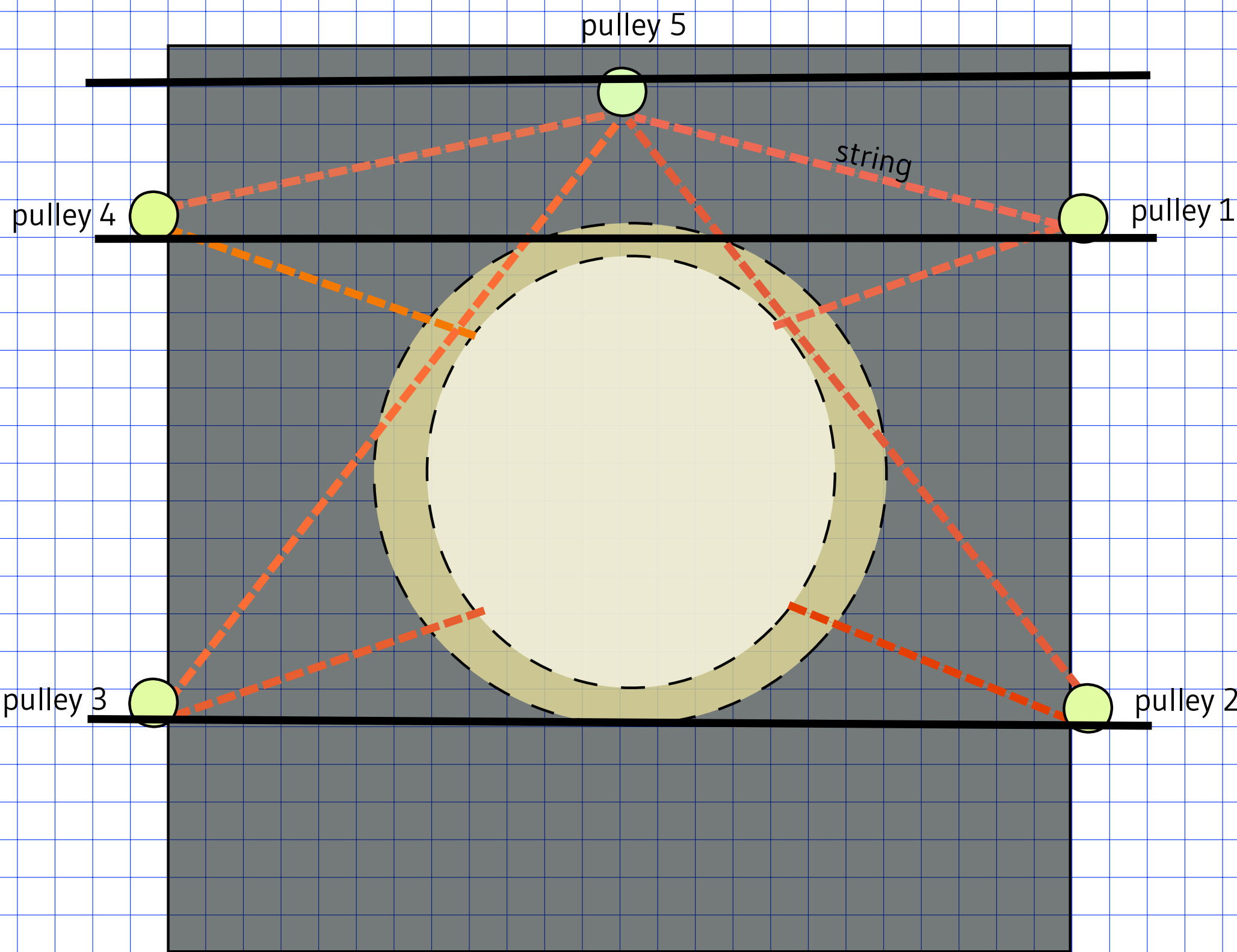
Acting space: 6,00 x 6,00 m minimum with a height of 3,50 m minimum (no elevated stage). Better is a height of the rigging at 4,50 m to fix the lights and the 5 pulleys for our „flying“ roof.

We need a black dance floor and and a dark backdrop.



Installation of the „flying“ roof

We need 5 points to fix the 5 pulleys. Please use other tubes than for the lights, because the tubes will move a little bit, when we draw the strings. Would be good to fix also the tubes of the rigging system, that they don't move to much when we pull the strings.



Explication:

- 2x PC or Fresnel à 1000 W with barndoors
- 4x PC à 650 W with barndoors
- 1X Profile Zoom 15-30° with color No 152
- please hang additional dimmable lights for the audience, we can control
- DMX Connection to our lighting desk 3- or 5- pole
- 2x plugs 230 V for sound
- + dimmer with 6 dimmable circuits inclusive dimmable light for the audience

Focus of the lights

